

WILLYS MOTORS, Inc.

# PARTS LIST



**Jeep**

**Model CJ-3B**

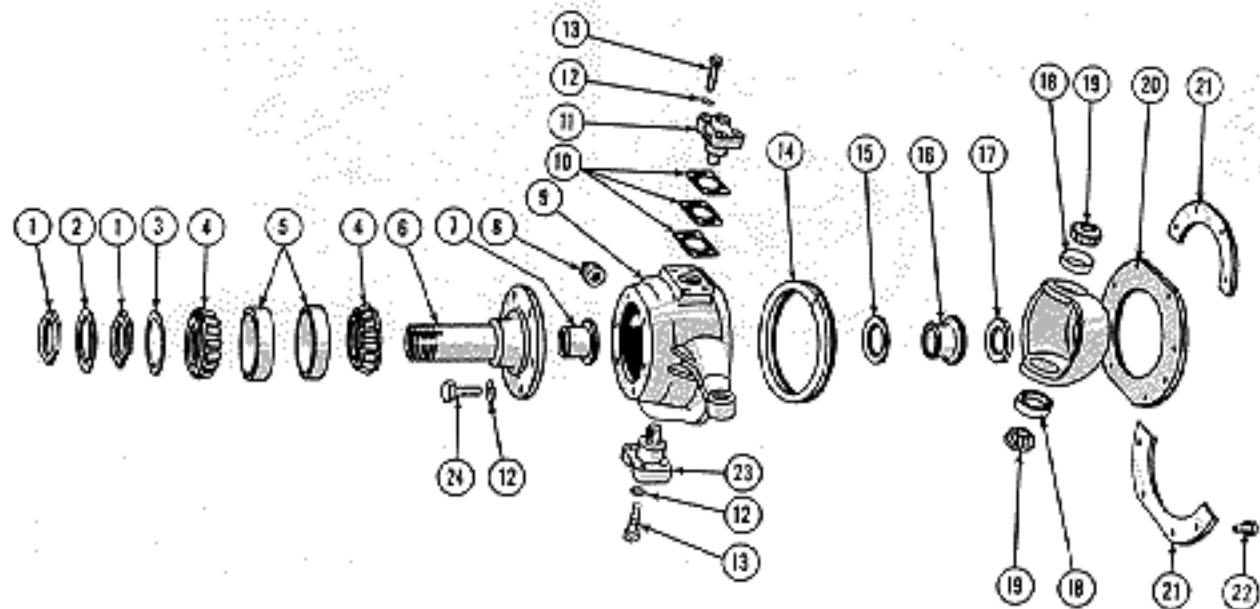


FIG. 255—STEERING KNUCKLE AND WHEEL BEARINGS

10554

- 1—Bearing Adjusting Nut
- 2—Lockwasher
- 3—Lockwasher
- 4—Bearing Cone and Rollers
- 5—Bearing Cap
- 6—Spindle
- 7—Bushings
- 8—Filler Plug

- 9—Left Knuckle and Arm
- 10—Shims
- 11—Upper Bearing Cap
- 12—Lockwasher
- 13—Bolt
- 14—Oil Seal and Backing Ring
- 15—Thrust Washer
- 16—Axle Pilot

- 17—Oil Seal
- 18—Bearing Cup
- 19—Bearing Cone and Rollers
- 20—Oil Seal
- 21—Retainer
- 22—Bolt
- 23—Lower Bearing Cap
- 24—Bolt

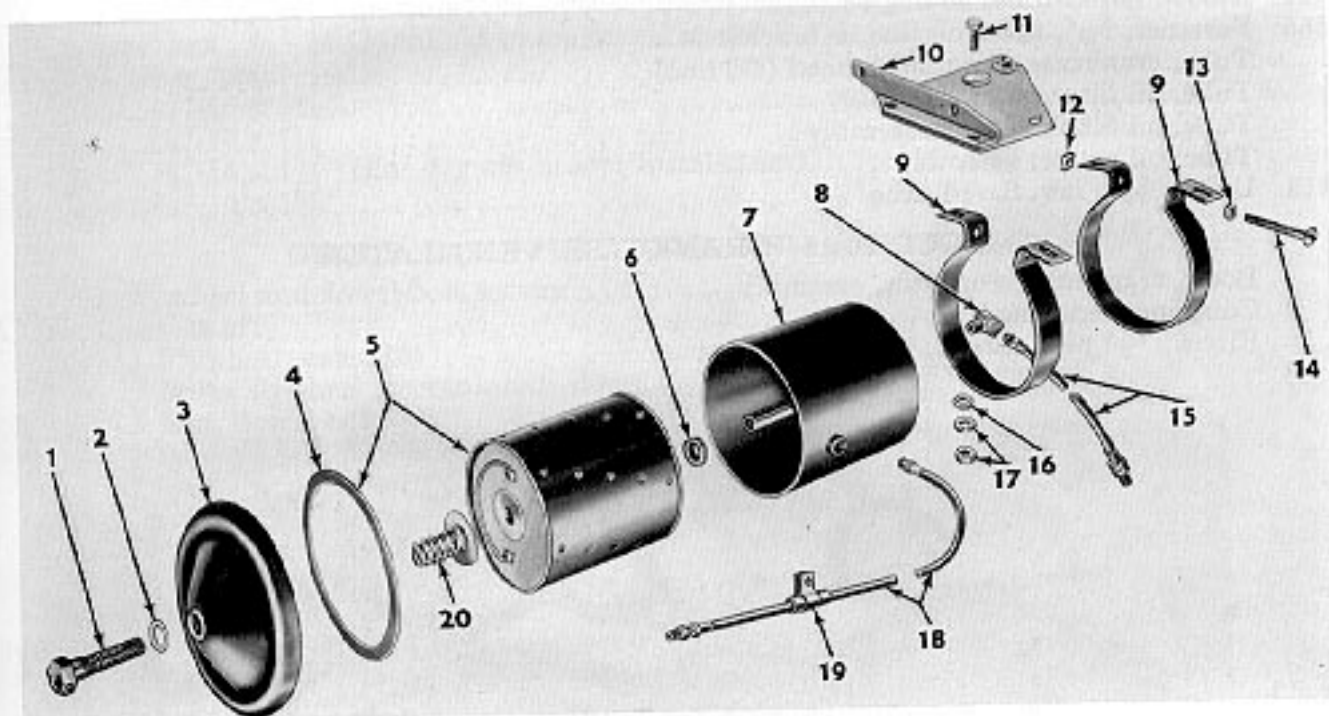


FIG. 12—OIL FILTER

Ref. No.	Description	Group No.	Ref. No.	Description	Group No.
1	Screw, oil filter cover	10-16A	11	Screw and lockwasher, $\frac{5}{16}$ "-18 x $\frac{3}{8}$ "	10-16A
2	Gasket, cover screw	10-16A	12	Nut, clamp bolt	10-16A
3	Cover, oil filter	10-16A	13	Lockwasher, strap clamp bolt	10-16A
4	Gasket, cover	10-16A	14	Bolt, strap clamp	10-16A
5	Kit, element and gasket	10-16A	15	Tube, oil filter, outlet	10-17
6	Gasket (Not supplied)	10-16A	16	Washer, plain, $\frac{5}{16}$ "	10-16A
7	Body (Not supplied)	10-16A	17	Nut and lockwasher, $\frac{5}{16}$ "-24	10-16A
8	Elbow, street, 45 degree	10-16A	18	Tube, oil filter, inlet	10-17
9	Strap (Not supplied)	10-16A	19	Clip, $\frac{1}{16}$ ", inlet tube	10-17
10	Bracket, oil filter	10-16A	20	Spring (Not supplied)	10-16A

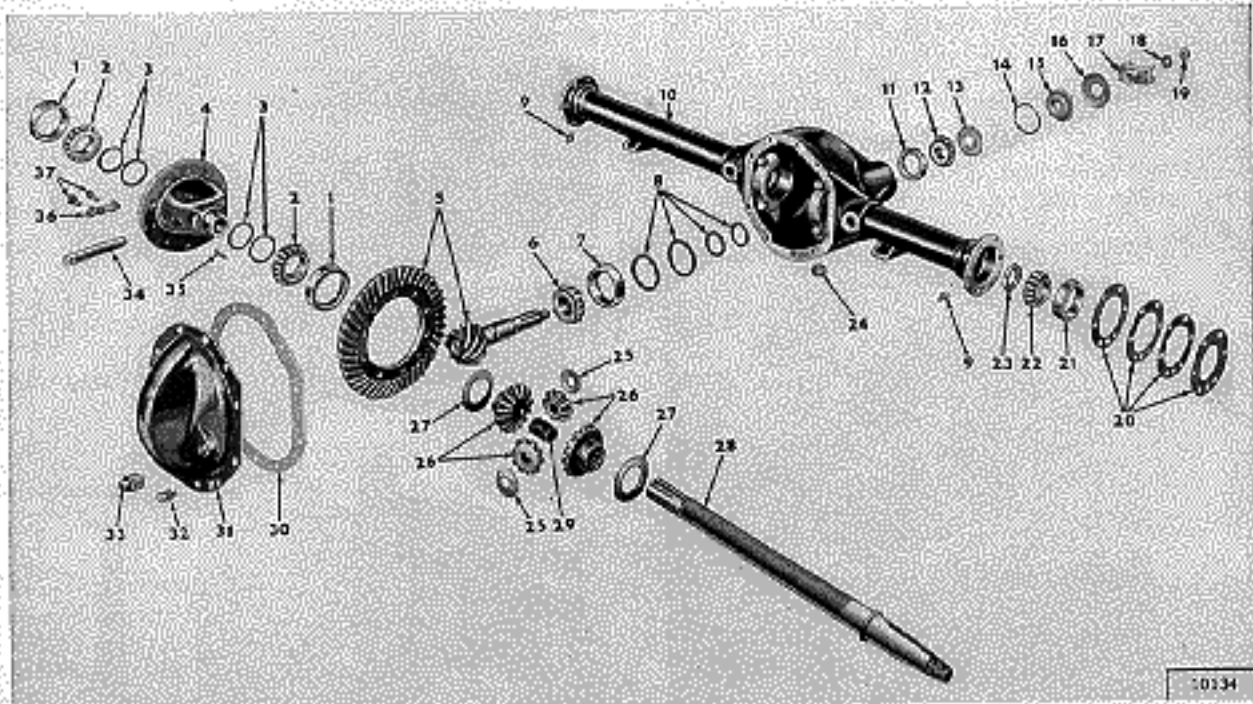


FIG. 265—REAR AXLE

- |                                  |                                   |                       |                         |
|----------------------------------|-----------------------------------|-----------------------|-------------------------|
| 1—Bearing Cup                    | 10—Housing                        | 19—Pinion Nut         | 28—Axis Shaft           |
| 2—Cone and Rollers               | 11—Outer Bearing Cup              | 20—Shims              | 29—Spacer               |
| 3—Shims                          | 12—Outer Bearing Cone and Rollers | 21—Cup                | 30—Gasket               |
| 4—Differential Case              | 13—Oil Slinger                    | 22—Cone and Rollers   | 31—Housing Cover        |
| 5—Gear and Pinion                | 14—Gasket                         | 23—Oil Seal           | 32—Screw and Lockwasher |
| 6—Inner Bearing Cone and Rollers | 15—Oil Seal                       | 24—Drain Plug         | 33—Filler Plug          |
| 7—Inner Bearing Cup              | 16—Dust Shield                    | 25—Thrust Washer      | 34—Lock Pin             |
| 8—Shims                          | 17—End Yoke                       | 26—Differential Gears | 35—Pinion Shift         |
| 9—Fitting                        | 18—Washer                         | 27—Thrust Washer      | 36—Lock Strap           |
|                                  |                                   |                       | 37—Screw                |

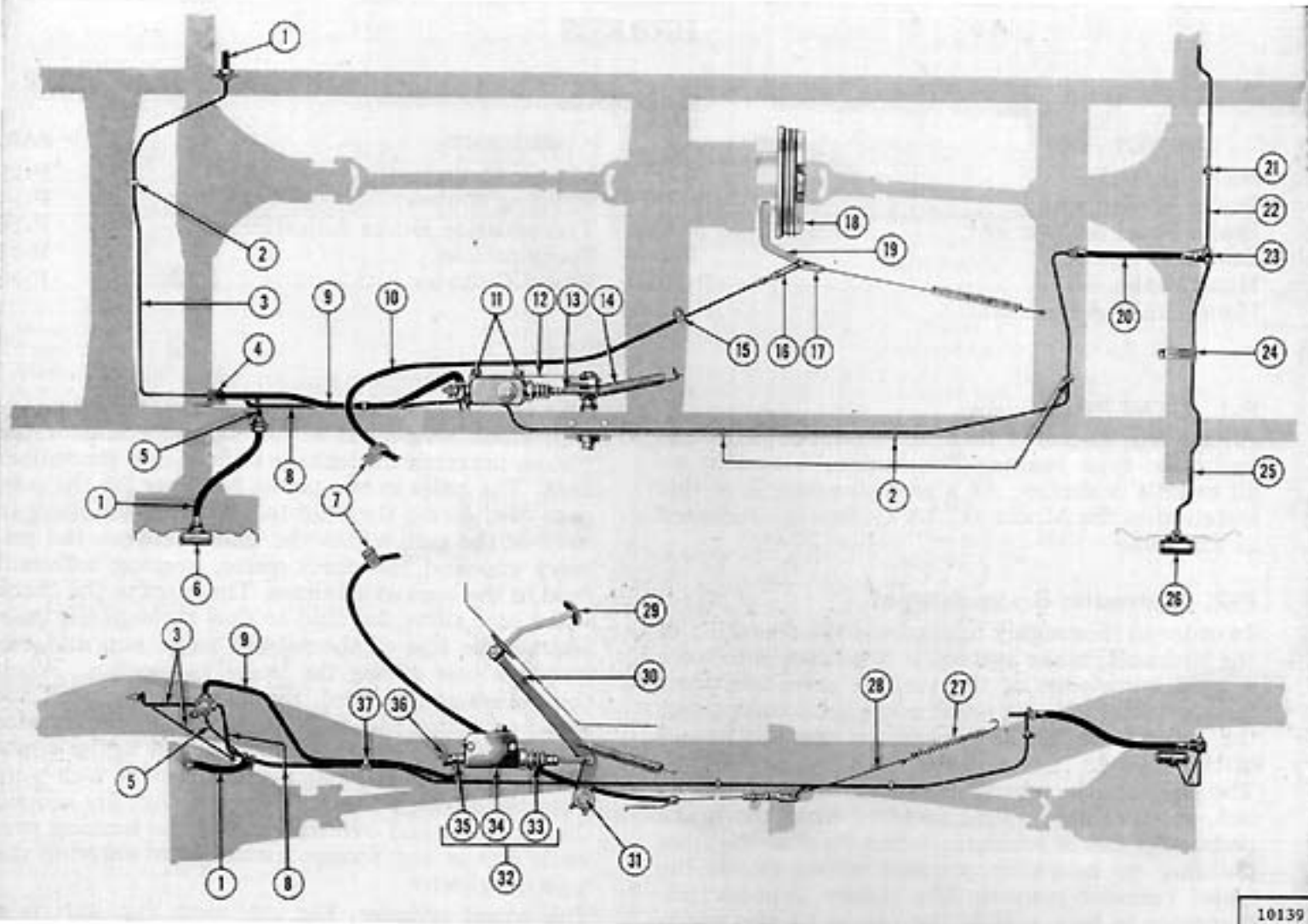


FIG. 304—HYDRAULIC BRAKE SYSTEM, CJ-3B, CJ-5, CJ-5A, CJ-6, CJ-6A

- 1—Brake Tube
- 2—Clip
- 3—Brake Tube
- 4—4-Way Tee
- 5—Brake Tube
- 6—Wheel Cylinder
- 7—Clip
- 8—Brake Tube
- 9—Brake Tube
- 10—Cable and Conduit Assembly
- 11—Screw and Lockwasher
- 12—Master Cylinder Tie Bar
- 13—Eye Bolt

- 14—Brake Pedal Retracting Spring
- 15—Clamp
- 16—Clevis
- 17—Clip
- 18—Brake Drum
- 19—Hand Brake Operating Lever
- 20—Brake Hose
- 21—Clip
- 22—Brake Tube
- 23—Tee
- 24—Clip
- 25—Brake Tube
- 26—Wheel Cylinder

- 27—Hand Brake Retracting Spring
- 28—Retracting Spring Link
- 29—Brake Pedal Pad
- 30—Brake Pedal
- 31—Brake Pedal Shaft
- 32—Master Cylinder
- 33—Bolt
- 34—Supply Tank
- 35—Outlet Fitting
- 36—Stop Light Switch
- 37—Clip

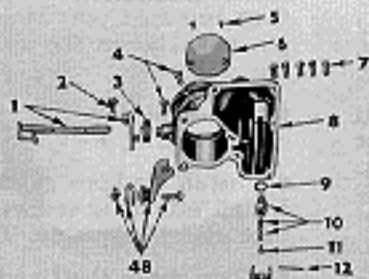
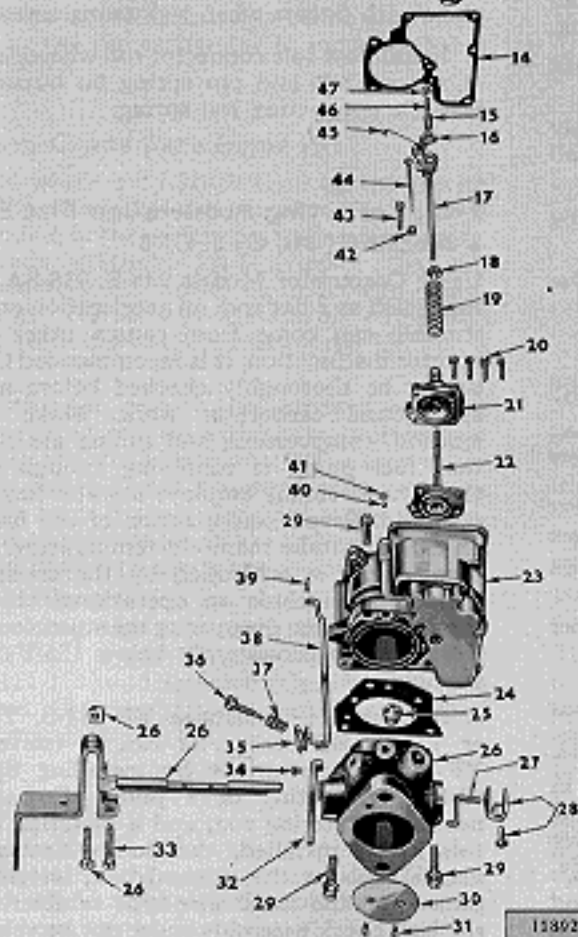


FIG. 132—CARBURETOR

- 1—Choke Shaft and Lever
- 2—Screw
- 3—Choke Lever Spring
- 4—Screw and Washer
- 5—Choke Valve Screw
- 6—Choke Valve
- 7—Screw and Washer
- 8—Air Horn
- 9—Needle Seat Gasket
- 10—Needle Spring and Seat
- 11—Needle Pin
- 12—Float Pin
- 13—Float
- 14—Gasket
- 15—Pump Spring
- 16—Metering Rod Arm
- 17—Pump Link
- 18—Pump Spring Retainer
- 19—Vacuum Diaphragm Spring
- 20—Screw and Washer
- 21—Diaphragm Housing
- 22—Diaphragm
- 23—Body
- 24—Gasket
- 25—Idle Port Plug
- 26—Throttle Body Lever and Shaft Assembly
- 27—Pump Link Connector
- 28—Throttle Shaft Arm
- 29—Screw and Washer
- 30—Throttle Valve
- 31—Throttle Valve Screw
- 32—Fast Idle Arm
- 33—Adjusting Screw
- 34—Body Flange Plug
- 35—Clevis Clip
- 36—Idle Adjusting Screw
- 37—Idle Screw Spring
- 38—Fast Idle Connector Rod
- 39—Pin Spring
- 40—Ball Check Valve
- 41—Ball Check Valve Retainer Ring
- 42—Metering Rod Jet
- 43—Low Speed Jet
- 44—Metering Rod
- 45—Metering Rod Spring
- 46—Inner Pump Spring
- 47—Pump Spring Retainer
- 48—Bracket and Clamp Assembly (Choke and Throttle)



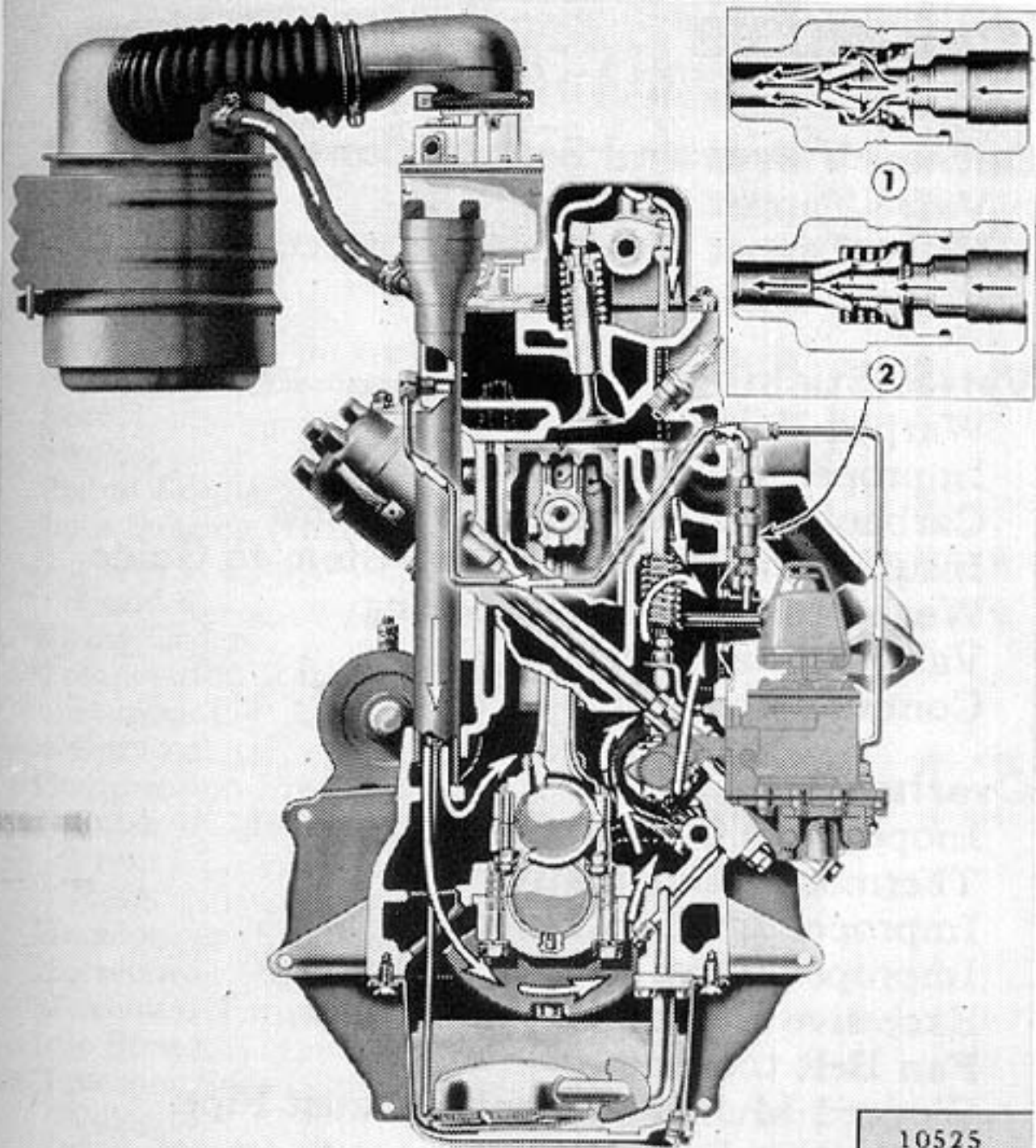


FIG. 115—CRANKCASE VENTILATION

1—Valve Open  
2—Valve Closed



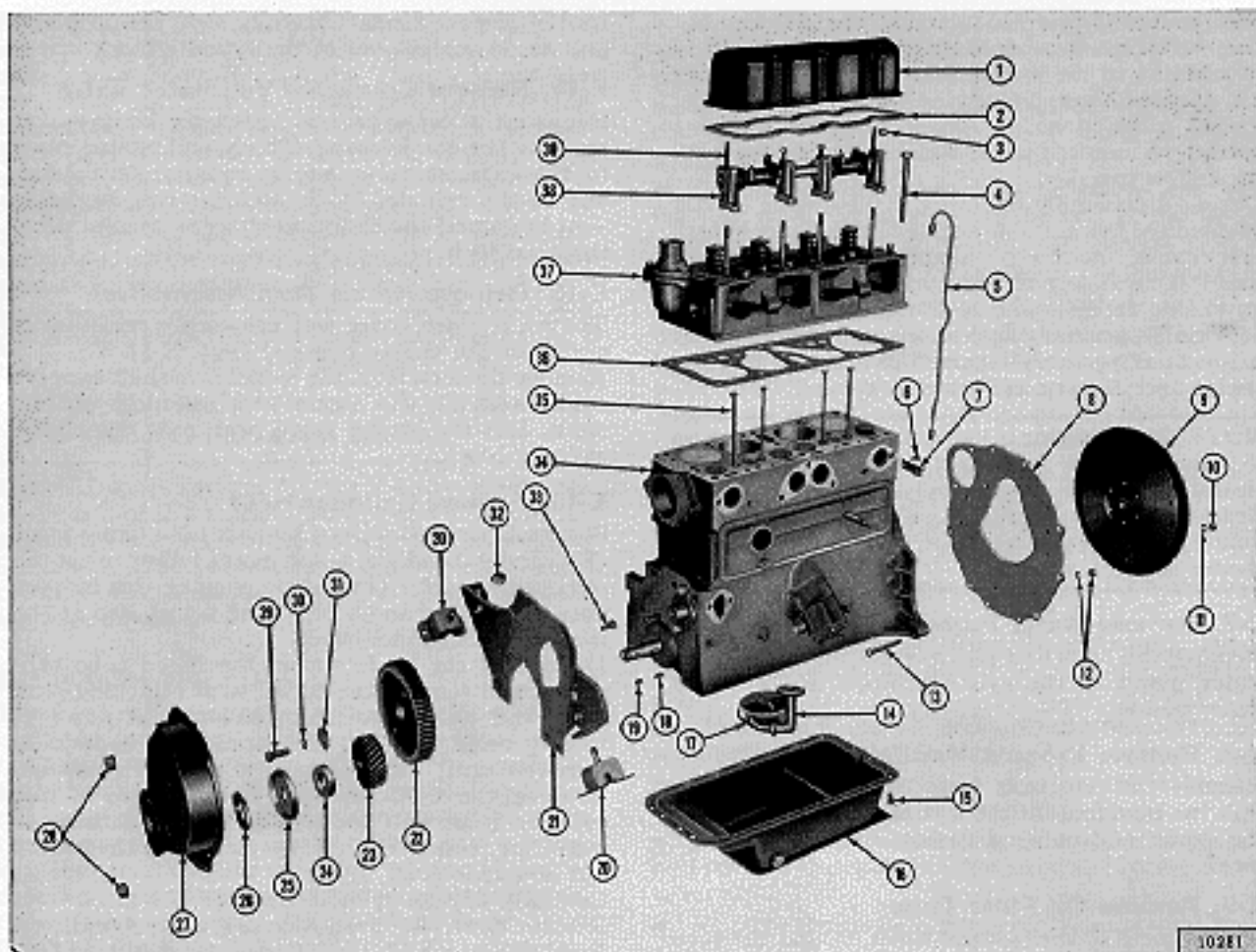
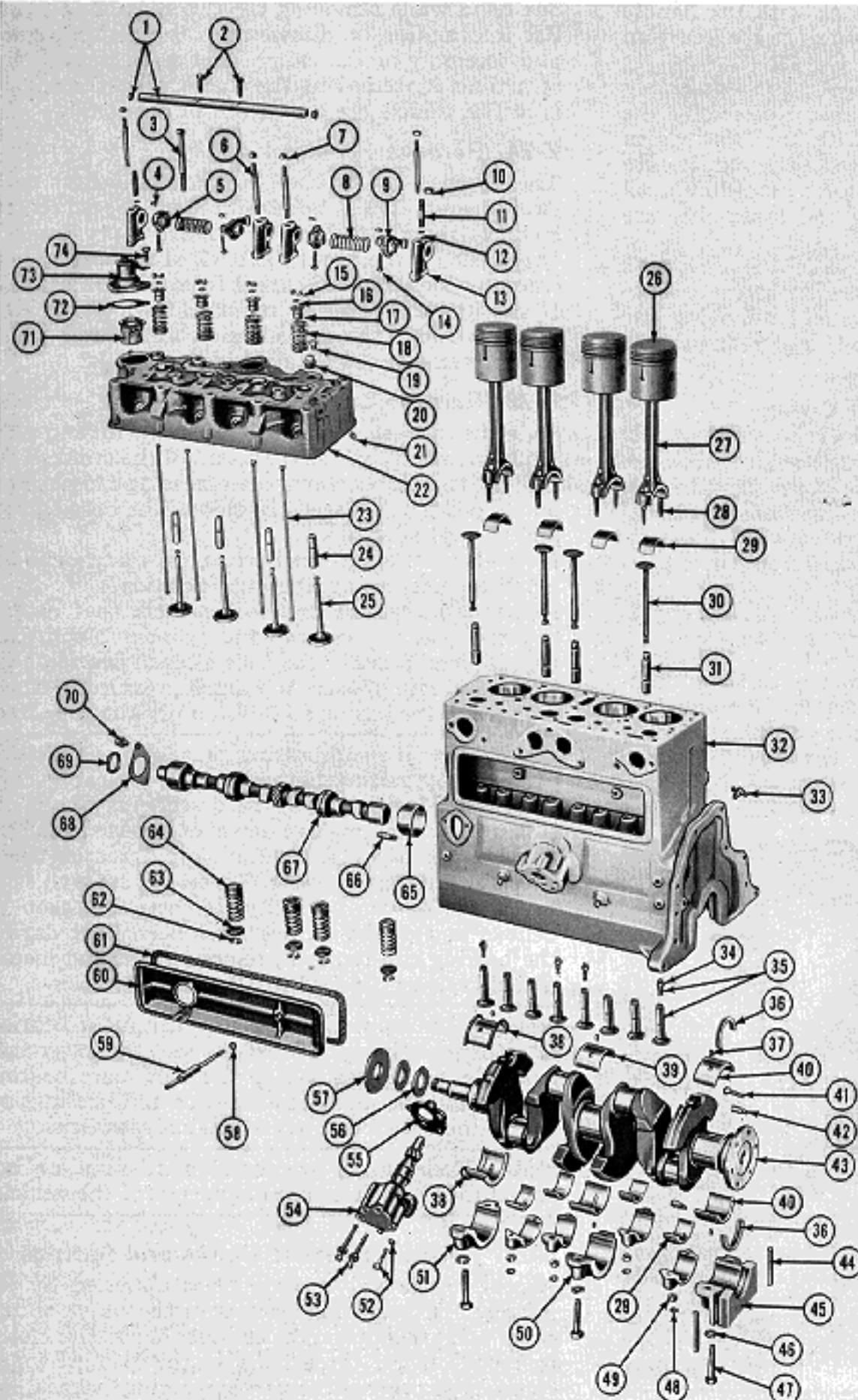


FIG. 77—F4-134 ENGINE

- |                               |                                   |                               |
|-------------------------------|-----------------------------------|-------------------------------|
| 1—Rocker Arm Cover            | 14—Oil Float Support              | 27—Timing Gear Cover          |
| 2—Gasket                      | 15—Screw and Lockwasher           | 28—Nut and Lockwasher         |
| 3—Rocker Shaft Stud Nut       | 16—Oil Pan                        | 29—Bolt                       |
| 4—Cylinder Head Bolt          | 17—Oil Float                      | 30—Lockwasher                 |
| 5—Crankshaft-to-Head Oil Line | 18—Woodruff Key No. 11            | 31—Camshaft Gear Washer       |
| 6—Screw and Lockwasher        | 19—Woodruff Key No. 9             | 32—Nut                        |
| 7—Oil Line Clip Bracket       | 20—Engine Support Front Insulator | 33—Bolt                       |
| 8—Engine Rear Plate           | 21—Engine Front Plate             | 34—Cylinder Block             |
| 9—Flywheel                    | 22—Camshaft Gear                  | 35—Intake Valve Push Rod      |
| 10—Special Nut                | 23—Crankshaft Gear                | 36—Cylinder Head Gasket       |
| 11—Lockwasher                 | 24—Thrust Washer                  | 37—Water Outlet Fitting       |
| 12—Nut and Lockwasher         | 25—Oil Slinger                    | 38—Rocker Shaft Bracket       |
| 13—Dowel Bolt                 | 26—Crankshaft Front Oil Seal      | 39—Valve Cover Hold Down Stud |



FIG. 79—F4-134 ENGINE



- 1—Rocker Arm Shaft and Plug
- 2—Rocker Shaft Lock Screw
- 3—Cylinder Head Bolt
- 4—Nut
- 5—Left Rocker Arm
- 6—Rocker Shaft Support Stud
- 7—Nut
- 8—Rocker Arm Shaft Spring
- 9—Right Rocker Arm
- 10—Nut
- 11—Rocker Arm Cover Stud
- 12—Plain Washer
- 13—Rocker Arm Shaft Bracket
- 14—Intake Valve Tappet Adjusting Screw
- 15—Intake Valve Spring Retainer Lock
- 16—Oil Seal
- 17—Intake Valve Spring Retainer
- 18—Intake Valve Spring
- 19—Flared Tube Connector
- 20—Pipe Plug  $\frac{1}{2}$ "
- 21—Pipe Plug  $\frac{1}{4}$ "
- 22—Cylinder Head
- 23—Intake Valve Push Rod
- 24—Intake Valve Guide
- 25—Intake Valve
- 26—Piston
- 27—Connecting Rod
- 28—Connecting Rod Cap Bolt
- 29—Connecting Rod Bearing Set
- 30—Exhaust Valve
- 31—Exhaust Valve Guide
- 32—Cylinder Block
- 33—Cylinder Block Drain Lock
- 34—Tappet Adjusting Screw
- 35—Exhaust Valve Tappet
- 36—Crankshaft Rear Bearing Seal
- 37—Crankshaft Bearing Dowel
- 38—Front Bearing Set
- 39—Center Bearing Set
- 40—Rear Bearing Set
- 41—Bolt
- 42—Dowel
- 43—Crankshaft
- 44—Rear Bearing Cap Packing
- 45—Rear Main Bearing Cap
- 46—Lockwasher
- 47—Bolt
- 48—Lock Nut
- 49—Connecting Rod Cap Nut
- 50—Center Main Bearing
- 51—Front Main Bearing
- 52—Screw and Lockwasher
- 53—Screw and Lockwasher
- 54—Oil Pump
- 55—Gasket
- 56—Crankshaft Shim
- 57—Crankshaft Thrust Washer
- 58—Gasket
- 59—Stud
- 60—Exhaust Valve Spring Cover
- 61—Gasket
- 62—Valve Spring Retainer Lower Lock
- 63—Roto-Cap
- 64—Exhaust Valve Spring
- 65—Camshaft Front Bushing
- 66—Timing Gear Oil Jet
- 67—Camshaft
- 68—Camshaft Thrust Plate
- 69—Spacer
- 70—Bolt and Lockwasher
- 71—Thermostat
- 72—Gasket
- 73—Water Outlet Fitting
- 74—Screw and Lockwasher

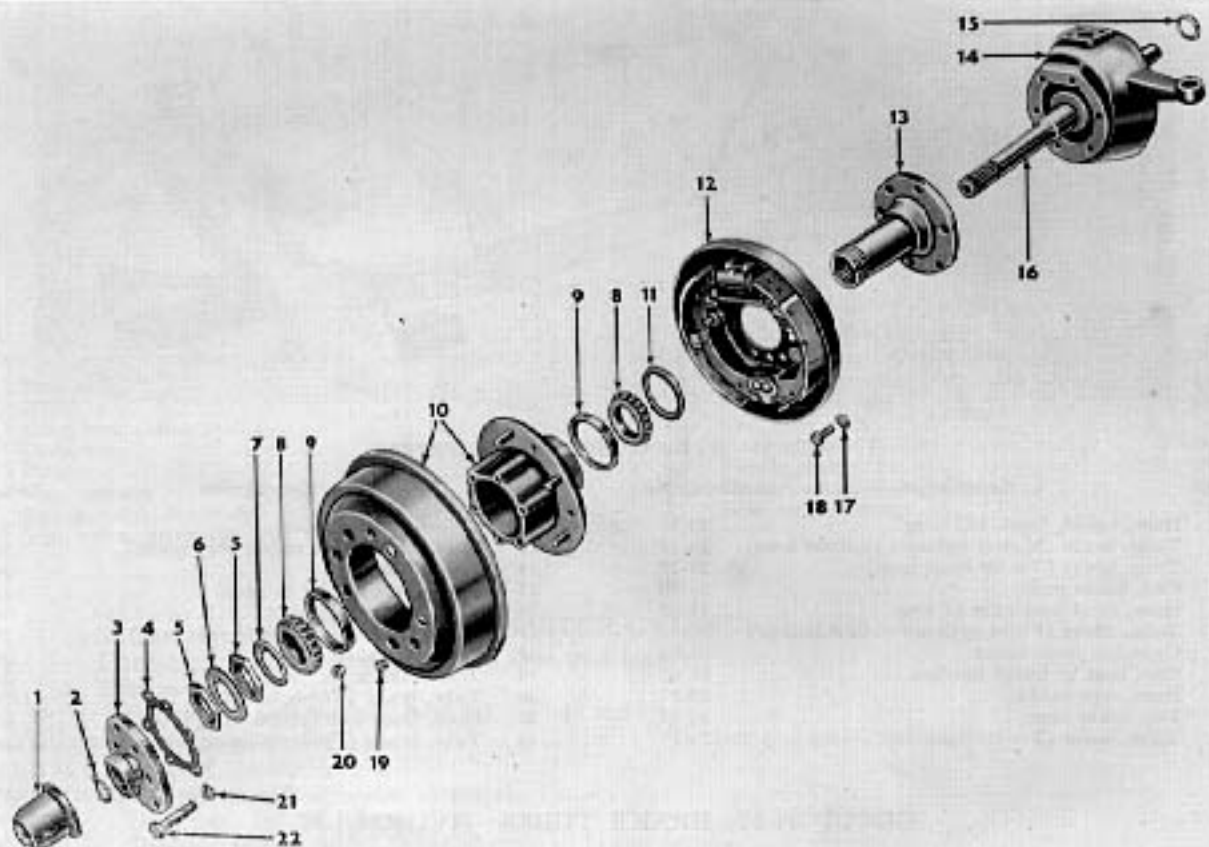
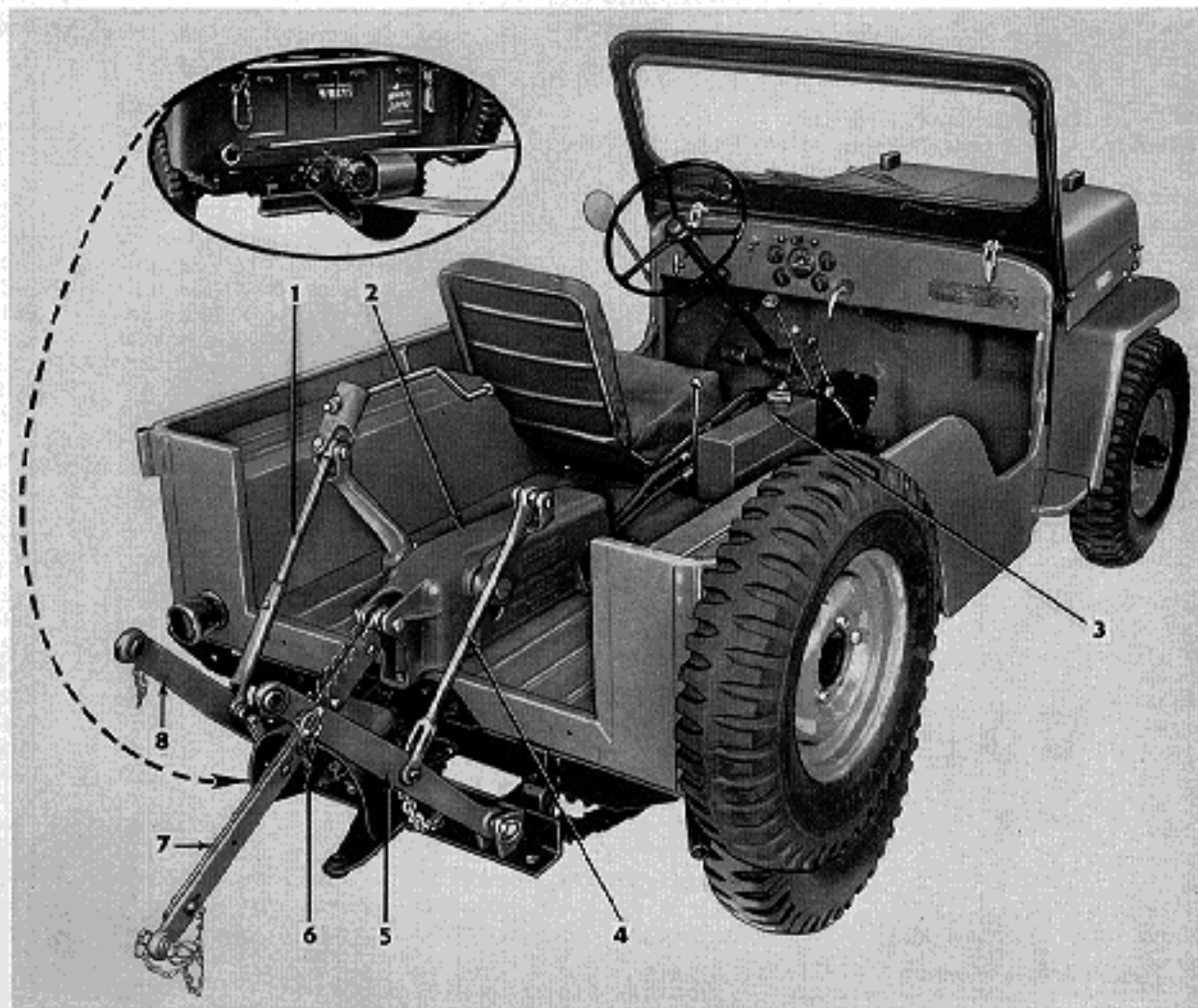


FIG. 52—FRONT WHEEL AND ATTACHING PARTS

Ref. No.	Description	Group No.	Ref. No.	Description	Group No.
1	Cap, wheel hub	25-02	13	Spindle and bushing	20-06
2	Snap ring, axle shaft, outer	20-05	14	Knuckle and arm, steering, left	20-06
3	Flange, drive	20-07	15	Washer, thrust, axle shaft	20-06
4	Gasket, drive flange	20-07	16	Kit, shaft, universal joint, left	20-05
5	Nut, retaining, wheel bearing	25-03	17	Lockwasher, $\frac{3}{8}$ ", front brake to steering knuckle	24-02
6	Lockwasher, wheel bearing nut	25-03	18	Bolt, hex. hd., $\frac{3}{8}$ "-24 x $\frac{3}{4}$ "	24-02
7	Lockwasher, wheel bearing	25-03	19	Screw, ctsk. hd., $\frac{1}{4}$ "-20 x $\frac{3}{8}$ "	25-01
8	Cone and rollers	25-03	20	Nut, hex. hd., $\frac{1}{2}$ "-20 wheel hub bolt	25-01
9	Cup	25-03	21	Lockwasher, $\frac{3}{8}$ ", flange to hub	20-07
10	Hub and drum, front, left	25-02	22	Bolt, hex. hd., $\frac{3}{8}$ "-16 x $1\frac{1}{2}$ " flange to hub	20-07
11	Oil seal	25-03			
12	Brake, front, left	24-02			



**FIG. 65—HYDRAULIC LIFT**

Ref. No.	Description	Group No.	Ref. No.	Description	Group No.
1	Link and fork	35-05	5	Link, lower right	35-05
2	Cylinder and housing	35-05	6	Chain, limit, assembly	35-05
3	Tank and valve	35-05	7	Link, upper	35-05
4	Rod, assembly	35-05	8	Link, lower left	35-05

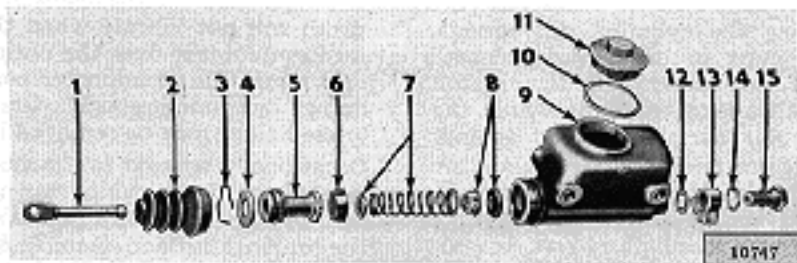


FIG. 320—MASTER BRAKE CYLINDER

- 1—Push Rod
- 2—Bolt
- 3—Piston Stop Lock Wire
- 4—Stop Plate
- 5—Piston

- 6—Master Cylinder Cup
- 7—Valve Spring Assembly
- 8—Valve Seat
- 9—Supply Tank
- 10—Filler Cap Gasket

- 11—Filler Cap
- 12—Outlet Fitting Gasket
- 13—Outlet Fitting
- 14—Outlet Fitting Bolt Gasket
- 15—Outlet Fitting Bolt

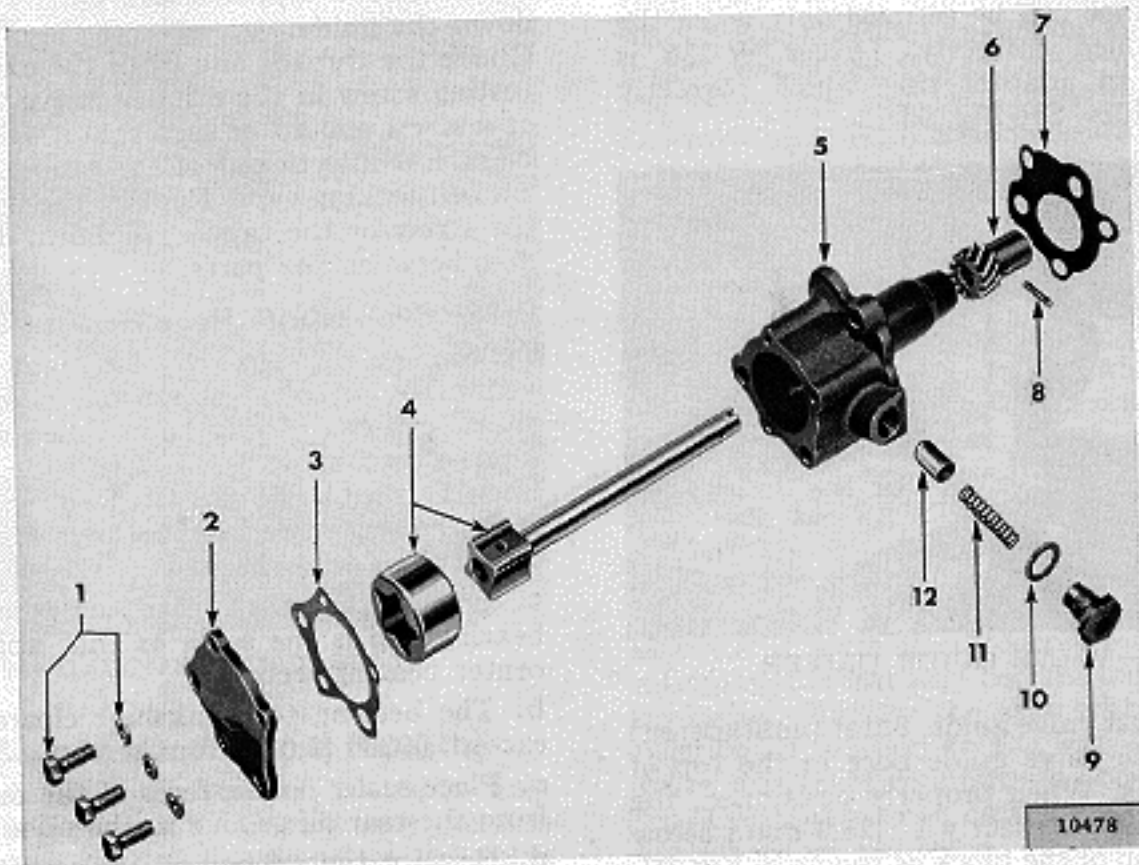


FIG. 99—OIL PUMP

- 1—Cover Screw
- 2—Cover
- 3—Cover Gasket
- 4—Shaft and Rotors
- 5—Body Assembly
- 6—Driven Gear

- 7—Pump Gasket
- 8—Gear Retaining Pin
- 9—Relief Valve Retainer
- 10—Relief Valve Retainer Gasket
- 11—Relief Valve Spring
- 12—Relief Valve Plunger

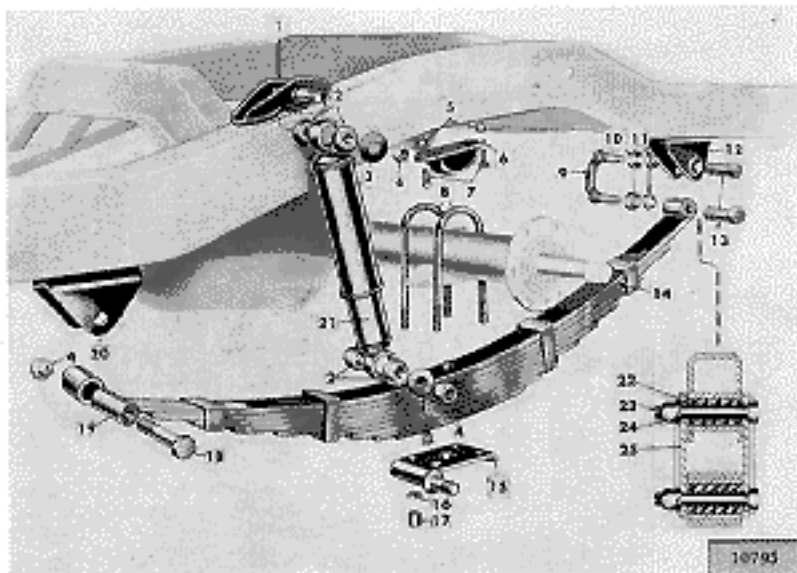


FIG. 337—REAR SPRING  
AND SHOCK  
ABSORBER—  
CJ-3B, CJ-5, CJ-5A,  
CJ-6, CJ-5A

- 1—Bucket
- 2—Bushing
- 3—Washer
- 4—Lock Nut
- 5—Nut and Lockwasher
- 6—Axle Bumper
- 7—Bolt
- 8—Spring Clip
- 9—U-Bolt
- 10—Grease Retainer
- 11—Grease Seal
- 12—Bracket
- 13—Bushing
- 14—Spring
- 15—Plate and Shaft
- 16—Lockwasher
- 17—Nut
- 18—Bolt
- 19—Bearing
- 20—Bracket
- 21—Shock Absorber
- 22—Silent Block Bearing
- 23—Bolt
- 24—Nut
- 25—Side Plate



# WARN . . .

CHUCK LEWIS MOTORS  
POST OFFICE BOX 791  
LARAMIE, WYOMING

82070

*"All Range"*

# OVER-DRIVE

MODELS

**3326**  
and  
**3329**

for

4 by 4

*Jeeps  
and  
Scouts*

## PARTS CATALOG WITH INSTALLATION OPERATION & SERVICE INSTRUCTIONS

OVER-DRIVE UNIT	PAGE
Installation . . . . .	1
Operation . . . . .	3
Lube "Run-In" . . . . .	3
Parts Catalog . . . . .	5
POWER TAKE-OFF INSTALLATION . . . . .	4

CATALOG No. 1842

CHUCK LEWIS MOTORS  
JEEP PARTS

600 South 2nd St., P.O. Box 791

Laramie, Wyo. 82070  
**WARN SALES CO.**

Riverton Box 6132, Seattle 88, Wash.



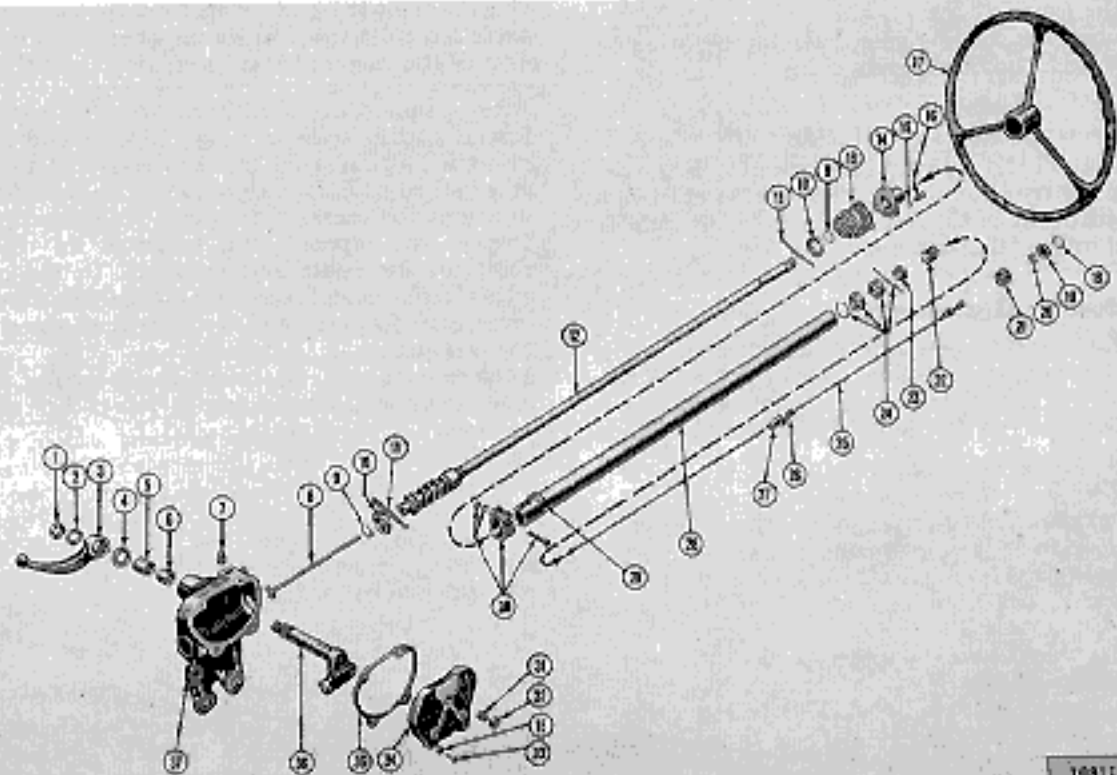


FIG. 295—STEERING GEAR

- |                         |                         |                       |                    |
|-------------------------|-------------------------|-----------------------|--------------------|
| 1-Nut                   | 11-Ball (Steel)         | 21-Nut                | 31-Adjusting Screw |
| 2-Lockwasher            | 12-Tube and Cam         | 22-Spring             | 32-Nut             |
| 3-Steering Gear Arm     | 13-Shims                | 23-Spring Seat        | 33-Bolt            |
| 4-Lever Shaft Oil Seal  | 14-Upper Cover          | 24-Bearing            | 34-Side Cover      |
| 5-Outer Housing Bushing | 15-Lockwasher           | 25-Horn Cable         | 35-Gasket          |
| 6-Inner Housing Bushing | 16-Bolt                 | 26-Horn Button Spring | 36-Shaft and Lever |
| 7-Filler Plug           | 17-Steering Wheel       | 27-Spring Cup         | 37-Housing         |
| 8-Cover and Tube        | 18-Horn Button Retainer | 28-Sheering Column    |                    |
| 9-Ball Retaining Ring   | 19-Horn Button          | 29-Oil Hole Cover     |                    |
| 10-Cup                  | 20-Horn Button Cap      | 30-Clamp              |                    |

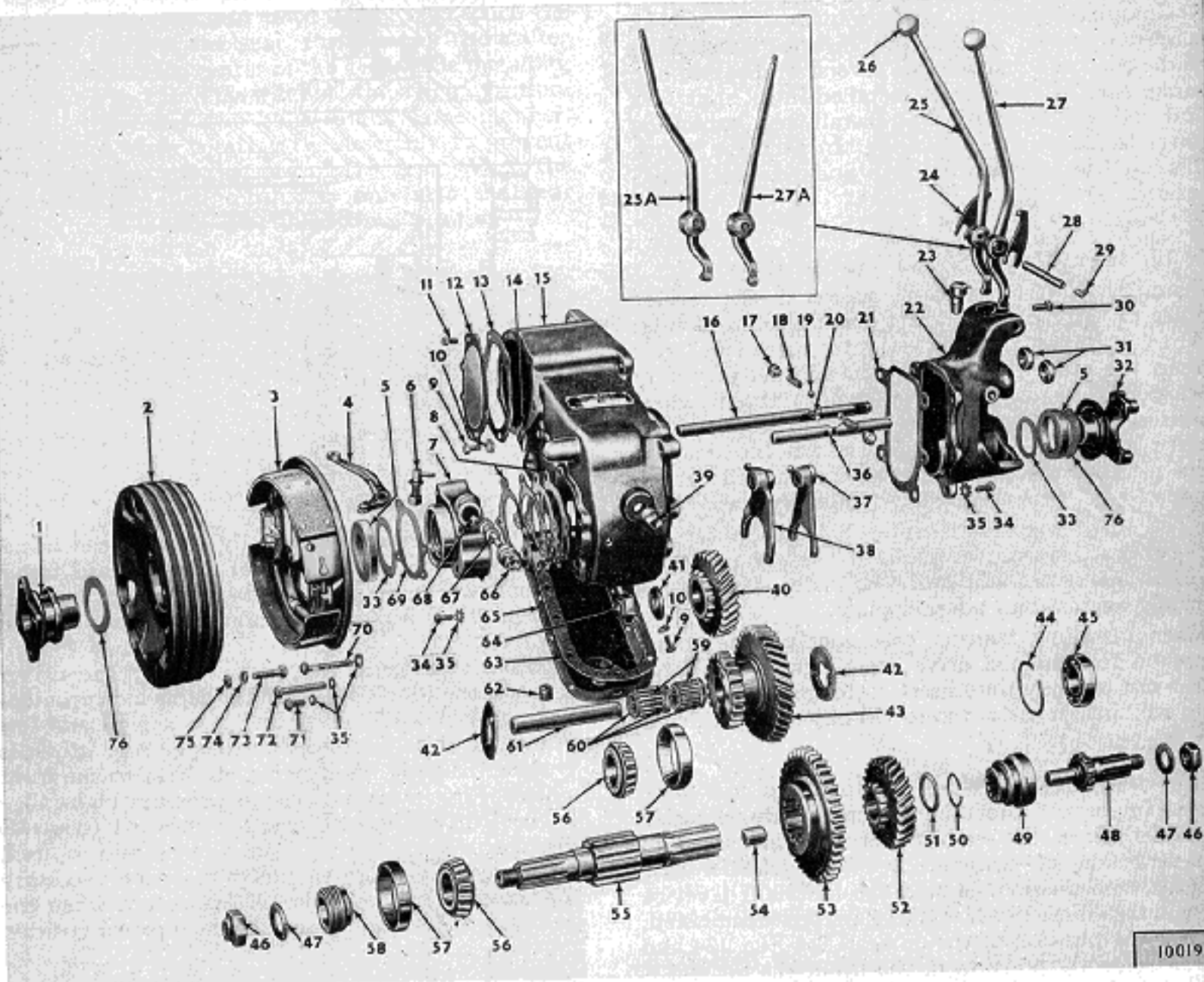


FIG. 226—TRANSFER CASE—LATE CJ-3B, CJ-5, CJ-6

- 1—Companion Flange
- 2—Brake Drum
- 3—Emergency Brake
- 4—Operating Lever
- 5—Oil Seal
- 6—Lever Stud
- 7—Rear Cap
- 8—Shims
- 9—Screw
- 10—Lockwasher
- 11—Bolt
- 12—Rear Cover
- 13—Gasket
- 14—Lock Plate
- 15—Transfer Case
- 16—Shift Rod
- 17—Poppet Plug
- 18—Poppet Spring
- 19—Poppet Ball
- 20—Interlock
- 21—Gasket
- 22—Front Cap
- 23—Breather
- 24—Shift Lever Spring
- 25—Shift Lever
- 25A—Shift Lever (used with 4-speed transmission)

- 26—Shift Lever Knob
- 27—Shift Lever
- 27A—Shift Lever (used with 4-speed transmission)
- 28—Pivot Pin
- 29—Lubrication Fitting
- 30—Set Screw
- 31—Oil Seal
- 32—Front Yoke
- 33—Gasket
- 34—Bolt
- 35—Lockwasher
- 36—Shift Rod
- 37—Shift Fork
- 38—Shift Fork
- 39—Filler Pipe Plug
- 40—Mainshaft Gear
- 41—Plain Washer
- 42—Thrust Washer
- 43—Intermediate Gear
- 44—Snap Ring
- 45—Bearing
- 46—Nut
- 47—Washer
- 48—Output Clutch Shaft
- 49—Output Clutch Gear
- 50—Snap Ring

- 51—Thrust Washer
- 52—Output Shaft Gear
- 53—Sliding Gear
- 54—Bushing
- 55—Output Shaft
- 56—Cone and Rollers
- 57—Bearing Cup
- 58—Speedometer Gear
- 59—Needle Bearings
- 60—Bearing Spacers
- 61—Intermediate Shaft
- 62—Drain Plug
- 63—Gasket
- 64—Nut
- 65—Bottom Cover
- 66—Sleeve
- 67—Speedometer Gear
- 68—Bushing
- 69—Gasket
- 70—Bolt
- 71—Bolt
- 72—Hex Nut
- 72—Bolt
- 73—Bolt
- 74—Lockwasher
- 75—Nut
- 76—Output Shaft Seal

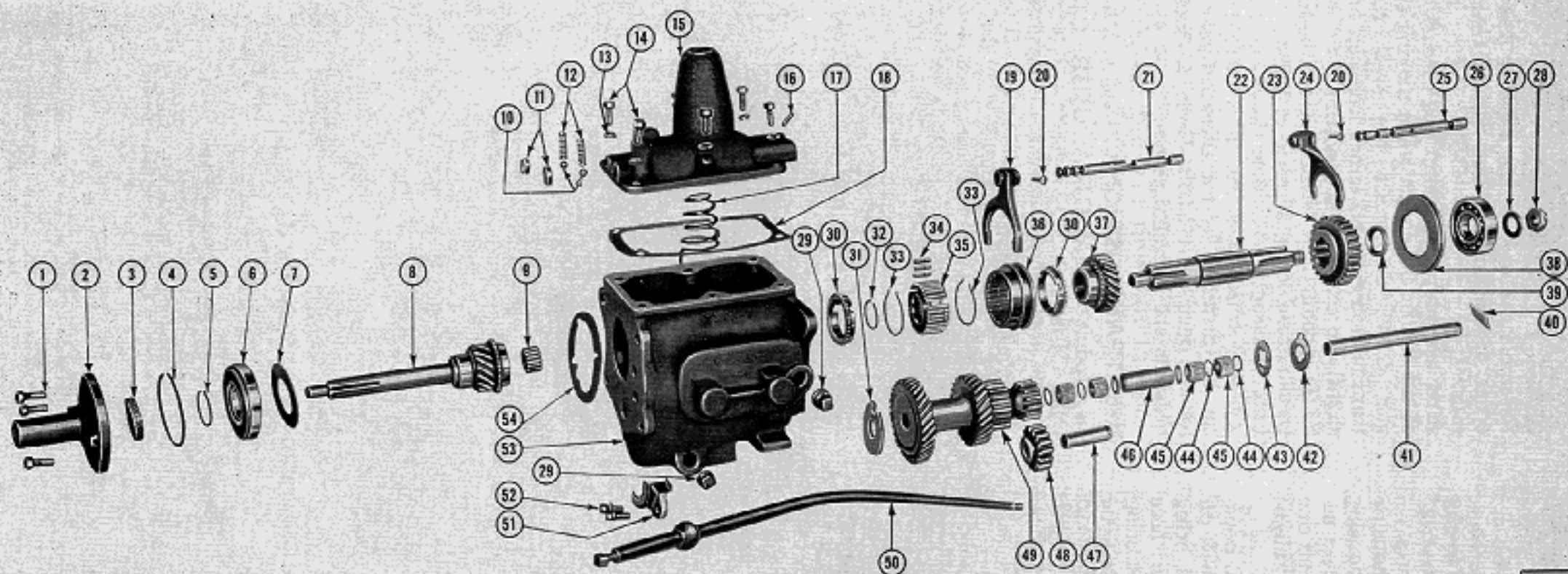


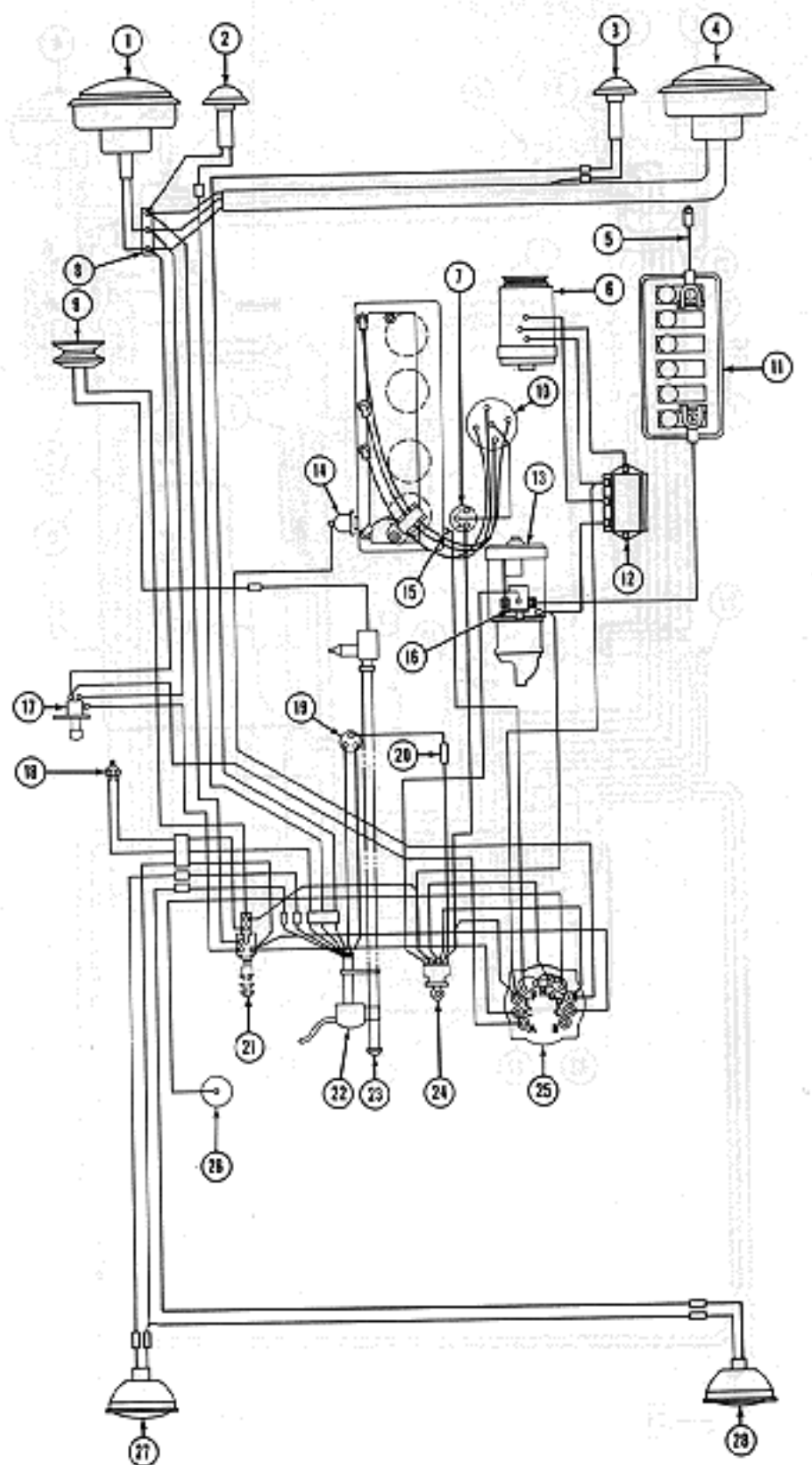
FIG. 208—THREE-SPEED TRANSMISSION—MODELS LATE CJ-2A, CJ-3A, CJ-3B, CJ-5, CJ-6

10769

- 1—Bearing Retainer Bolt
- 2—Bearing Retainer
- 3—Bearing Retainer Oil Seal
- 4—Bearing Snap Ring
- 5—Main Drive Gear Snap Ring
- 6—Main Drive Gear Bearing
- 7—Front Bearing Washer
- 8—Main Drive Gear
- 9—Pilot Roller Bearing
- 10—Poppet Ball
- 11—Shift Rail Cap
- 12—Poppet Spring
- 13—Lockwasher
- 14—Shift Housing Bolt
- 15—Control Housing
- 16—Interlock Plunger
- 17—Shift Lever Spring
- 18—Shift Tower Gasket

- 19—High and Intermediate Shift Fork
- 20—Shift Fork Pin
- 21—High and Intermediate Shift Rail
- 22—Main Shaft
- 23—Sliding Gear
- 24—Low and Reverse Shift Fork
- 25—Low and Reverse Shift Rail
- 26—Rear Bearing
- 27—Main Shaft Washer
- 28—Main Shaft Nut
- 29—Filler Plug
- 30—Blocking Ring
- 31—Front Countershaft Thrust Washer
- 32—Clutch Hub Snap Ring
- 33—Synchronizer Spring
- 34—Synchronizer Plate
- 35—Clutch Hub
- 36—Clutch Sleeve

- 37—Second Speed Gear
- 38—Rear Bearing Adapter
- 39—Bearing Spacer
- 40—Lock Plate
- 41—Countershaft
- 42—Rear Countershaft Thrust Washer
- 43—Rear Countershaft Thrust Washer
- 44—Countershaft Bearing Washer
- 45—Countershaft Bearing
- 46—Countershaft Bearing Spacer
- 47—Reverse Gear Shaft
- 48—Reverse Idler Gear
- 49—Countershaft Gear Set
- 50—Shift Lever
- 51—Oil Collector
- 52—Oil Collector Screw
- 53—Transmission Case
- 54—Bearing Retainer Gasket



11514

FIG. 148—WIRING DIAGRAM—MODEL CJ-3B

(Serial No. 35522 and after)

- 1—Left Headlamp
- 2—Left Parking and Signal Lamp
- 3—Right Parking and Signal Lamp
- 4—Right Headlamp
- 5—Battery Ground Strap
- 6—Generator
- 7—Ignition Coil
- 8—Junction Block
- 9—Horn
- 10—Distributor
- 11—Battery
- 12—Voltage Regulator

- 13—Starting Motor
- 14—Oil Pressure Signal Switch
- 15—Temperature Sending Unit
- 16—Solenoid Switch
- 17—Foot Dimmer Switch
- 18—Stop Light Switch
- 19—Directional Signal Flasher
- 20—Fuse
- 21—Light Switch
- 22—Directional Signal Switch
- 23—Horn Button
- 24—Ignition and Starter Switch

- 25—Instrument Cluster
  - A—Upper Beam Indicator
  - B—Turn Signal Indicator
  - C—Instrument Lights
  - D—Oil Pressure Indicator
  - E—Charging Indicator
  - F—Temperature Gauge
  - G—Fuel Gauge
  - H—Instrument Voltage Regulator
- 26—Fuel Gauge Tank Unit
- 27—Left Tail and Stop Lamp
- 28—Right Tail and Stop Lamp